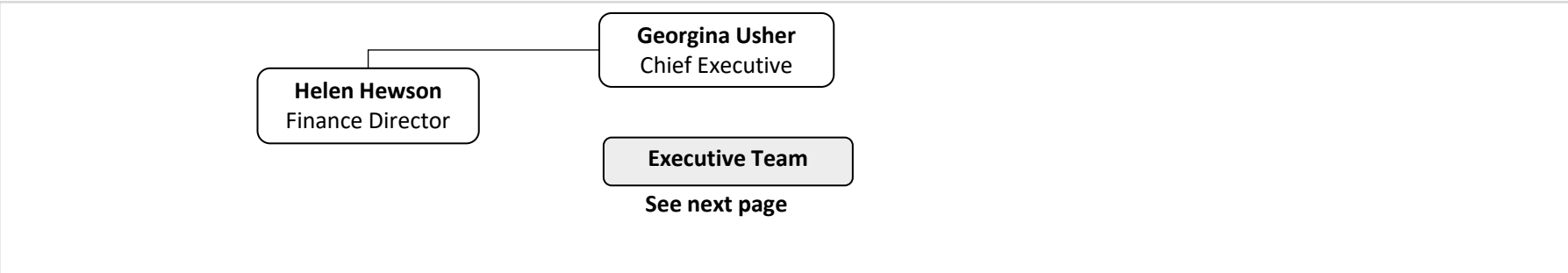


BRITISH FENCING - OCT 2024

British Fencing Board: SARA PANTULIANO (CHAIR), TABATHA BARTON, BRIAN BRITAIN, JADE CLARKE, MARY COHEN, TOMMY CURRAN JONES, YASHMIN HARUN, THOMAS NIPPRESS, ALEX O'CONNELL, CHRIS TIDMARSH, JOHN TROIANO

Head Office				Commercial	Events	Membership & Community Development			GBR Pathways Development	
Governance / Operations	Finance/ HR	Mar Comms	E&S		Events	Clubs & Region	Participation Retention & Growth Programmes	Workforce & Coaching	Athlete Development Programmes	International Pathway Framework



- BF Board Committees**
- AGRC**
Jade Clarke
 - Nominations**
Sara Pantuliano

- BF Standing Committees**
- Safety**
Peter Jacobs
 - Rules**
Steve Higginson
 - International Relations**
Pat Aiyenuro
 - BF Honours**
Pat Aiyenuro
 - Athlete Rep Panel**
 - Medical Committee**
Clare Halsted
- (delegated responsibilities by Board)

- BF Workgroups**
- BF Safeguarding Work Groups**
Liz Behnke
 - Home Countries**
(delegated resp by HC Boards & BF Exec)
 - Ranking Group**
Peter Smith
 - Environmental Sustainability Group**
Clare Halsted
- (delegated responsibilities by Executive Team)

- Honorary & Exec Officers**
- Pat Aiyenuro**
President
 - Teddy Bourne**
Electoral Officer
 - John Bumphrey**
Disciplinary and Grievance Chair
 - Hilary Philbin**
International Relations Director
 - Clare Halsted**
Medical Officer
 - Vacant**
BF Calendar Administrator



**HONESTY
RESPECT
EXCELLENCE**

BRITISH FENCING - OCT 2024

Employee

Contract

ADP = Athlete Development Programme
 HE = Higher Education
 PM = Project Manager
 PO = Project Officer

Georgina Usher
 Chief Executive
 PT

Carolynn Rayment
 PA Support
 PT

Helen Hewson
 Finance Director
 PT

Senior Management and Dept Heads

V Bailey
 Participation Director
 FT

Vacant
 Pathways Director
 FT

Liz Behnke
 Lead Safeguarding
 Officer
 PT

James Craig
 Commercial Director
 PT

Dusty Millar
 Head of Coaching
 PT

Sophie DeVooght
 Head of Comms
 PT

Harry Brown
 Head of Licensing
 FT

Managers, Officers & Admin Support

Evie Millar
 Membership &
 Events Manager
 FT

Sophia Jones
 Customer Support
 Manager
 PT

Ian Lichfield*
 Pathway Ops &
 Logistics Manager
 FT

Chris Turner
 Coaching &
 Workforce Mgr
 FT

John Stanley
 Comms Manager
 PT

Gabriella James
 Finance Manager
 FT

Marjorie Kuhne
 Commercial
 Manager
 FT

Samantha Hepple
 Membership &
 Events Officer (BF)
 FT

Rick Rogers
 P&P Officer
 Inclusion
 PT

Neil Brown
 GBR Officer
 (Camps & DiSE)
 PT

Lorraine Rose
 Workforce Officer
 FT

Heidi Januszewski
 Comms Admin
 FT

Nathalie Worgan
 Finance Officer
 PT

Anna Ronzino
 Commercial
 Officer
 FT

Niall Harman
 GBR Support
 FT

Denise Johnson
 GBR Support
 FT

Carlene Patrick
 GBR Support
 FT

Rose McNally
 Comms Admin
 FT

Giulia Enright
 Commercial
 Admin
 FT

Non staff roles

Jon Willis
 Competition
 Manager

Nat Lewis
 GBR Weapon
 Support (Para)

Fran Whalley
 GBR Weapon
 Support (Sabre)

Ian Lichfield*
 GBR Weapon
 Support (Epee)

Pat Aiyenuro
 Olympic Team
 Manager

**Siân Hughes
 Pollitt**
 Content
 Contributor

Karim Bashir
 Sword Mgr